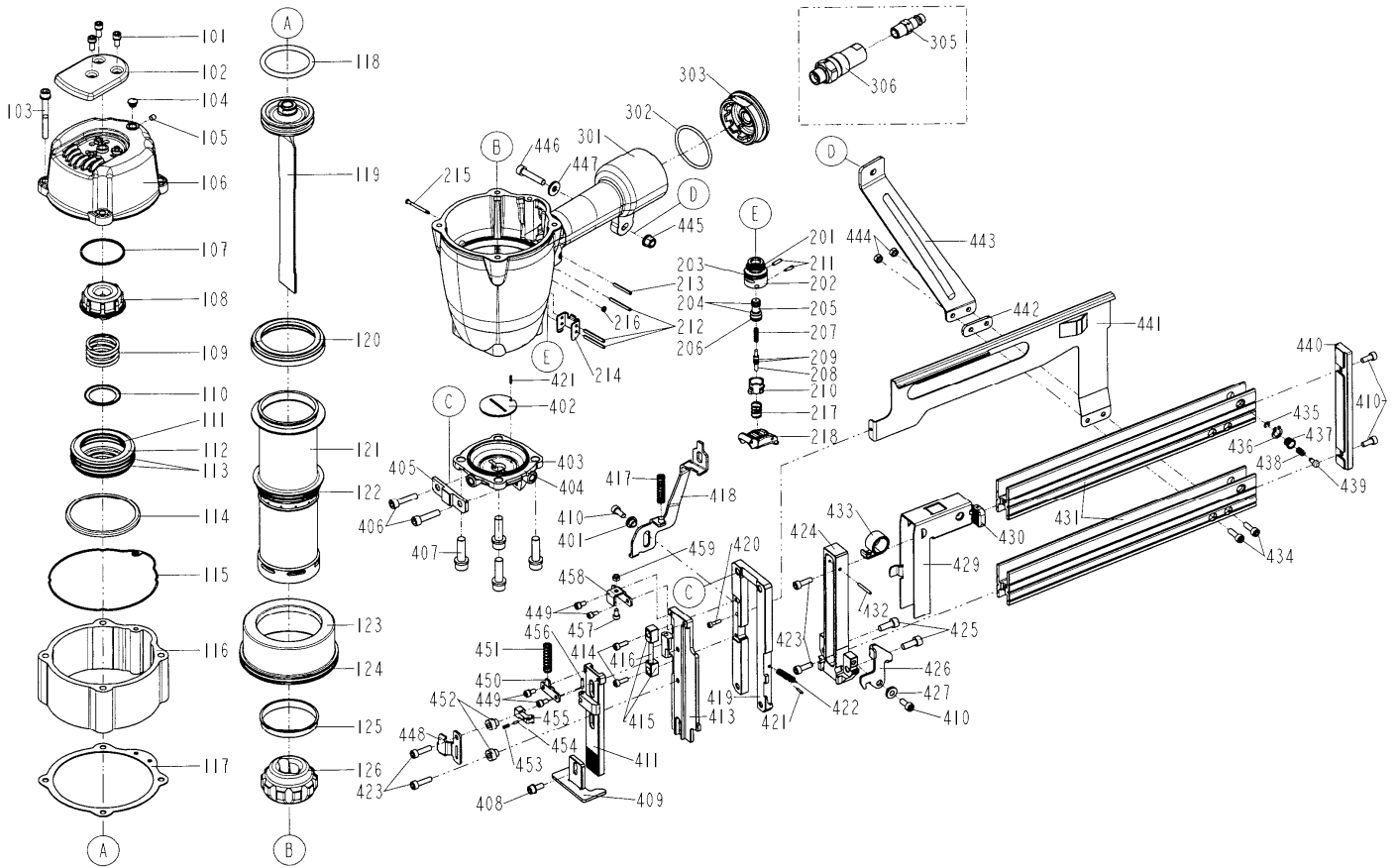


DIAGRAM OF MON/S529-160/CE



ITEM NO.	PART NO.	DESCRIPTION	ITEM NO.	PART NO.	DESCRIPTION	ITEM NO.	PART NO.	DESCRIPTION
101	2040100-03090-2	BOLT ASSY	211	2040400-05060-0	SPRING PIN	425	2040101-04040-2	HEX.SOC.HD.BOLT
102	11371-0374706-1	DEFLECTOR	212	2040400-05160-0	SPRING PIN	426	1135Y-1524701-1	LATCH
103	2040101-04281-0	HEX.SOC.HD.BOLT	213	2040400-05130-0	SPRING PIN	427	11398-1524701-1	LATCH SPRING BUSHING A
104	1135S-0350001-1	GROMMET	214	11338-0374703-1	SAFETY GUIDE	429	11363-1684701-1	PUSHER
105	2040104-03010-0	HEX.SOC.HD.SCREW	215	11318-0374701-1	TRIGGER PIVOT PIN	430	1135F-0684701-1	PUSHER CUSHION
106	11369-0374309-1	CAP	216	1131D-0460001-1	URETHANE RETAINER	431	11389-1520001-1	MAGAZINE A
107	11380-0374702-1	GASKET	217	11376-0370001-1	SPRING	432	2040400-04110-0	SPRING PIN
108	11370-0370003-2	SEAL	218	11224-0371102-1	TRIGGER UNIT	433	11278-1520001-1	SPRING UNIT
109	11360-0370001-2	COMPRESSION SPRING	301	11230-037H802-1	GUN BODY UNIT	434	2040101-03070-0	HEX.SOC.HD.BOLT
110	11381-0370003-1	WASHER	302	2041108-05040-0	O - RING	435	2040302-23010-0	E - RING
111	2041108-05050-0	O - RING	303	11346-0371310-1	END CAP	436	2040301-10010-0	SNAP RING
112	11368-0370005-1	HD.VALVE PISTON	305	1135V-0000005-1	AIR PLUG	437	1130W-1524701-1	DOOR LATCH COVER
113	2041108-07040-0	O - RING	306	11217-1520001-1	VALVE UNIT	438	11311-0074701-1	LATCH SPRING
114	1136D-0374701-1	PRESS RING	401	11398-1524704-1	LATCH SPRING BUSHING C	439	11310-0074701-1	DOOR LATCH
115	11302-0374705-1	CYLINDER CAP SEAL	402	11388-1524701-1	DRIVER GUIDE	440	11347-1684701-1	REAR PLATE
116	1130E-1684301-1	CAP	403	2041101-07010-0	O - RING	441	11348-1680001-1	MOUNTING BRACKET
117	1130B-1524701-1	GASKET	404	11326-1524701-1	BASE	442	11380-1524701-1	GASKET
118	2041104-05091-0	O - RING	405	11353-1524701-1	DRIVER GUIDE COVER B	443	11323-1684701-1	POSITIONING SHEET
119	11204-1680001-2	DRIVER UNIT	406	2040101-04090-2	HEX.SOC.HD.BOLT	444	2040500-03020-0	LOCK NUT
120	11399-0370002-1	COLLAR	407	2040100-05010-2	BOLT ASSY	445	2040501-04010-0	BOLT CAP
121	11320-1680001-1	CYLINDER	408	2040100-03240-0	BOLT W/FLAT WASHER	446	2040101-04110-0	HEX.SOC.HD.BOLT
122	2041106-07020-0	O - RING	409	11254-1524701-1	SAFETY A UNIT	447	2040202-04010-0	FLAT WASHER
123	11321-1680001-1	CYLINDER SPACER	410	2040101-03050-2	HEX.SOC.HD.BOLT	448	1137A-1524701-1	COVER-SAFETY A
124	2041108-10010-0	O - RING	411	11254-1684701-1	SAFETY C UNIT	449	2040100-02040-2	BOLT ASSY
125	11322-0370002-1	CYLINDER RING	413	11352-1684701-1	DRIVER GUIDE COVER A	450	1137A-1524702-1	COVER-SAFETY B
126	11327-1524701-1	BUMPER	414	2040101-02060-2	HEX.SOC.HD.BOLT	451	11337-1684701-1	SAFETY SPRING
201	2041104-02020-0	O - RING	415	1131F-1524701-1	ANCHOR BLOCK	452	11398-1524703-1	LATCH SPRING BUSHING D
202	11374-0084701-1	PLUNGER CAP	416	11329-1524701-1	PIN	453	1137T-1524701-1	SPRING
203	2041104-02030-0	O - RING	417	11337-1524701-1	SAFETY SPRING	454	2040400-03030-0	SPRING PIN
204	2041100-01070-0	O - RING	418	11256-1684701-1	SAFETY B UNIT	455	113AK-1524701-1	STOPPER A
205	1133S-0080001-1	VALVE PLUNGER	419	11303-1684702-1	DRIVER GUIDE	456	2040400-04060-0	SPRING PIN
206	2041100-01030-0	O - RING	420	2040101-01010-0	HEX.SOC.HD.BOLT	457	2040101-02030-0	HEX.SOC.HD.BOLT
207	11376-0254701-1	SPRING	421	2040400-03050-0	SPRING PIN	458	1137A-1524703-1	COVER-SAFETY C
208	11375-0084701-1	PLUNGER	422	11328-1524701-1	PULL SPRING	459	2040500-02010-0	LOCK NUT
209	2041102-01030-0	O - RING	423	2040101-03080-2	HEX.SOC.HD.BOLT			
210	11373-0084701-1	TRIGGER VALVE HEAD	424	11303-1684701-1	DRIVER GUIDE			