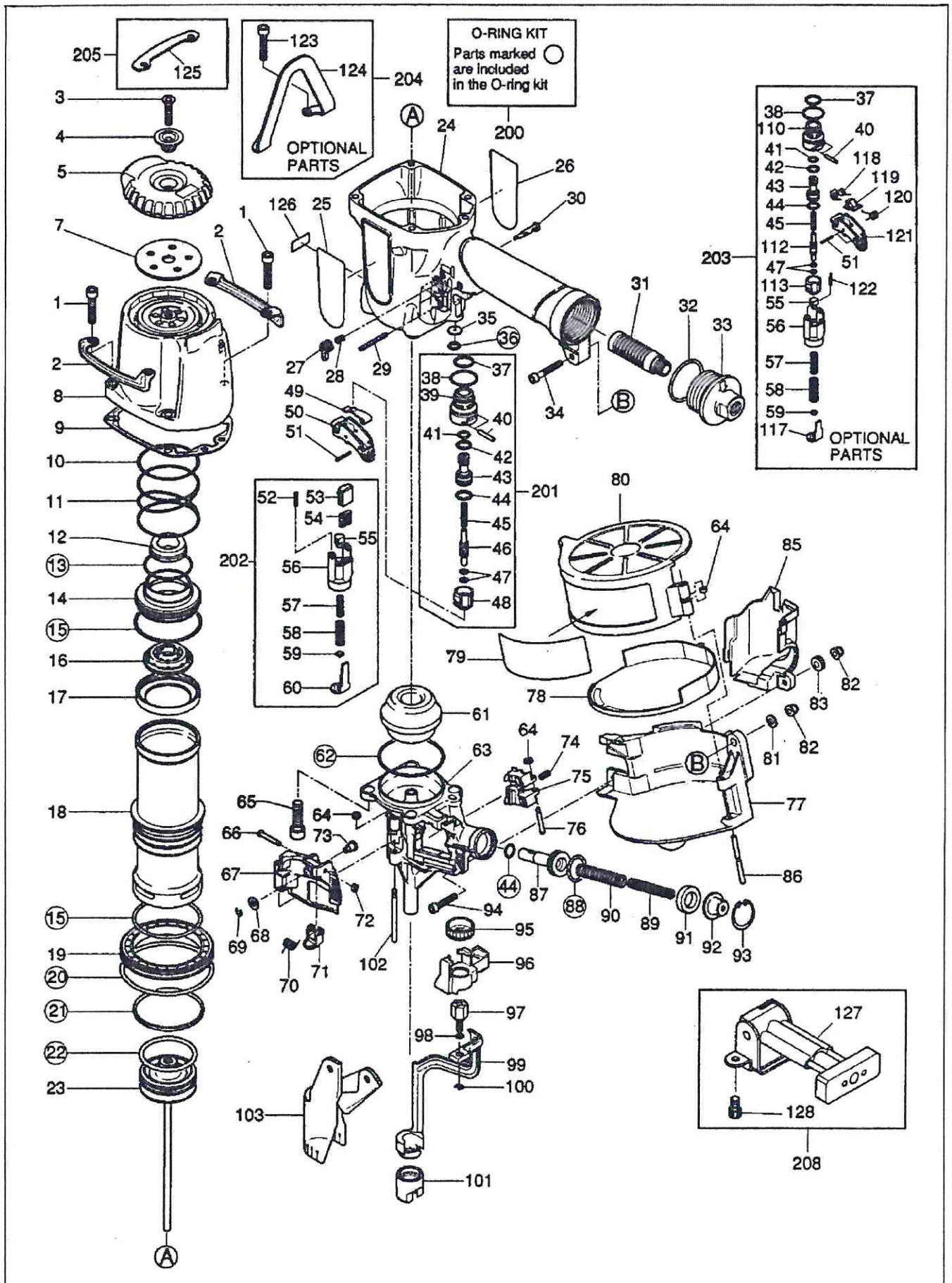


# CN650M(CE) METAL & CONCRETE COIL NAILER



Part No.	Part Code	Description	price
1	BB40422	BOLT 6X30 FOR CC00402	0,16
2	CN36348	PROTECTOR	1,42
3	AA82411	SCREW M6X27	0,24
4	KN11393	EXHAUST COVER HOLDER	2,11
5	CN35294	EXHAUST COVER	4,78
7	KN11392	FILTER B	2,04
8	CN70160	CYLINDER CAP UNIT	26,06
9	CN36308	CYLINDER CAP SEAL	8,05
10	CN36331	WASHER, CYLINDER CAP	0,32
11	KK23655	COMP. SPRING 3655	3,45
12	CN36107	PLAIN WASHER B	3,61
13	HH11141	O-RING ARP568-130	0,55
14	CN35290	HEAD VALVE PISTON	1,5
15	HH12101	O-RING AG55	0,48
16	CN35289	PISTON STOP	2,82
17	CN34994	HEAD VALVE SEAL	2,27
18	CN36358	CYLINDER	32,36
19	CN36312	CYLINDER RING	1,5
20	HH14152	O-RING AS568-231	0,71
21	CN36330	CHECK VALVE	3,45
22	HH11809	O-RING P53	2,74
23	CN70168	MAIN PISTON UNIT	44,16
24	CN81067	FRAME	56,83
25	CN36376	LABEL CN650M CE	0,95
26	CN35636	WARNING LABEL(FRAME)	0,63
27	CN35075	TRIGGER LOCK LEVER	0,48
28	KK23507	SPRING 3507	0,16
29	FF21611	ROLL PIN 3X32 AW	0,16
30	CN35074	TRIGGER LOCK DIAL	0,48
31	TA17024	FILTER A	4,3
32	HH12118	O RING 1AG35	0,48
33	TA17032	END CAP	8,05
34	BB40470	SCREW 5X32	0,24
35	CN36372	RUBBER WASHER	0,79
36	HH11105	O-RING AP7 N5525	0,16
37	HH11125	O-RING AP12 CN65086	0,16
38	HH11138	O-RING AP20	0,24

39	CN33909	TRIGGER VALVE HOUSING	1,56
40	FF30161	PIN 161	0,24
41	HH11119	O-RING AP6 N10027	0,16
42	HH11209	O-RING 1BP7 N10028	0,24
43	CN33010	PILOT VALVE	2,51
44	HH11113	O-RING AP9 N5528	0,16
45	KK24123	COMPRESSION SPRING 4123	0,55
46	CN35128	TRIGGER VALVE STEM	1,34
47	HH11901	O-RING 1.4 X 2.5 CN65020	0,16
48	CN33910	TRIGGER VALVE CAP	0,87
49	CN35115	CONTACT LEVER	0,95
50	CN35001	TRIGGER	0,48
51	FF22402	SPRING PIN 3X16 (LIGHT LOAD)	0,08
52	KK23129	COMPRESSION SPRING 3129	0,08
53	CN35656	LEVER	0,48
54	CN34500	SPRING, LEVER	1,09
55	CN35059	CONTACT ARM GUIDE B	1,56
56	CN35002	ARM GUIDE	1,09
57	KK23735	COMPRESSION SPRING 3735	0,24
58	KK23736	COMPRESSION SPRING 3736	0,32
59	CN35004	CONTACT BUMPER	0,32
60	CN35003	CONTACT ARM A	0,58
61	KN11219	BUMPER	4,15
62	HH11162	O-RING ARP568-140	0,87
63	CN36361	NOSE	163,98
64	EE39602	WASHER 7	0,16
65	BB40443	SCREW M8 X 28	0,24
66	FF41599	PIN 1599 (REPLACES FF41587)	0,95
67	CN36369	DOOR	30,26
68	EE39814	PLAIN WASHER D	0,08
69	JJ10405	E-RING 4	0,08
70	KK33261	TORSION SPRING 3261 (REPLACES KK33169)	0,24
71	CN33679	DOOR LUTCH	4,93
72	EE39609	RUBBER WASHER 1.8X6X2	0,16
73	FF41837	STEP PIN 1837	1,03
74	KK23710	COMP. SPRING 3710	0,71
75	CN36373	FEED PAWL	10,95
76	FF41820	STEP PIN 1820	1,94

77	CN70192	MAGAZINE	9,69
78	CN36370	NAIL SUPPORT	3,06
79	CN36377	CAUTION LABEL	0,91
80	CN33216	MAGAZINE COVER	4,44
81	EE31105	PLAIN WASHER 1-6	0,08
82	CC00401	ELASTIC STOP NUT M5	0,24
83	CN32170	COLLAR	0,47
85	CN36363	COVER	1,82
86	FF31244	PIN 1244	1,38
87	CN36317	FEED PISTON	6,1
88	HH11107	O-RING AP18	0,24
89	KK23627	COMP. SPRING 3627	0,4
90	KK23335	COM. SPRING 3335	0,79
91	CN37998	FEED PISTON STOP (WAS CN37368)	0,74
92	CN37995	SPRING COLLER (WAS CN37843)	1,6
93	JJ22408	C-RING 24	0,32
94	BB40460	BOLT 5 X 28	0,12
95	CN37836	ADJUST DIAL	2,97
96	CN36322	SPACER	0,91
97	CN35006	CONTACT BOLT	2,73
98	HH11903	O-RING 1A 1.2 X 4 T29051(REPLACES TA15277)	0,23
99	CN70171	CONTACT ARM B UNIT	26,51
100	JJ10404	E-RING 3.2	0,08
101	HN10184	HOLDER O	3,45
102	FF31250	STRAIGHT PIN 1250	0,7
103	CN36362	DUST COVER	1,5
110	CN31323	TRIGGER VALVE HOUSING	1,88
112	CN33723	TRIGGER VALVE STEM	1,03
113	CN31346	TRIGGER VALVE CAP	0,87
117	CN35140	CONTACT ARM A	3,97
118	KK33247	SPRING 3247	1,09
119	TA16138	S.T. LEVER	5,64
120	KK33144	TORSION SPRING 3144	1,18
121	CN35714	TRIGGER	0,55
122	KK23282	COM. SPRING 3282	0,32
123	BB40438	BOLT 6X32	0,16
124	CN36374	HANGER	21,07
125	CN36333	PROTECTOR B	6,93

126	CN34309	PLASTIC SHEET LABEL (100421)	0,7
127	CN33662	HANGER UNIT	4,2
128	BB40415	BOLT 5X10	0,12
200	CN81072	O-RING KIT CN665	9,93
201	CN80546	TRIGGER VALVE KIT(CN890S)	8,68
202	CN81013	ARM GUIDE KIT	8,6
203	CN80535	SEQUENTIAL TRIP KIT	25,65
204	CN81069	HANGER KIT	21,3
208	CN80122	STAND ASSY	52,01