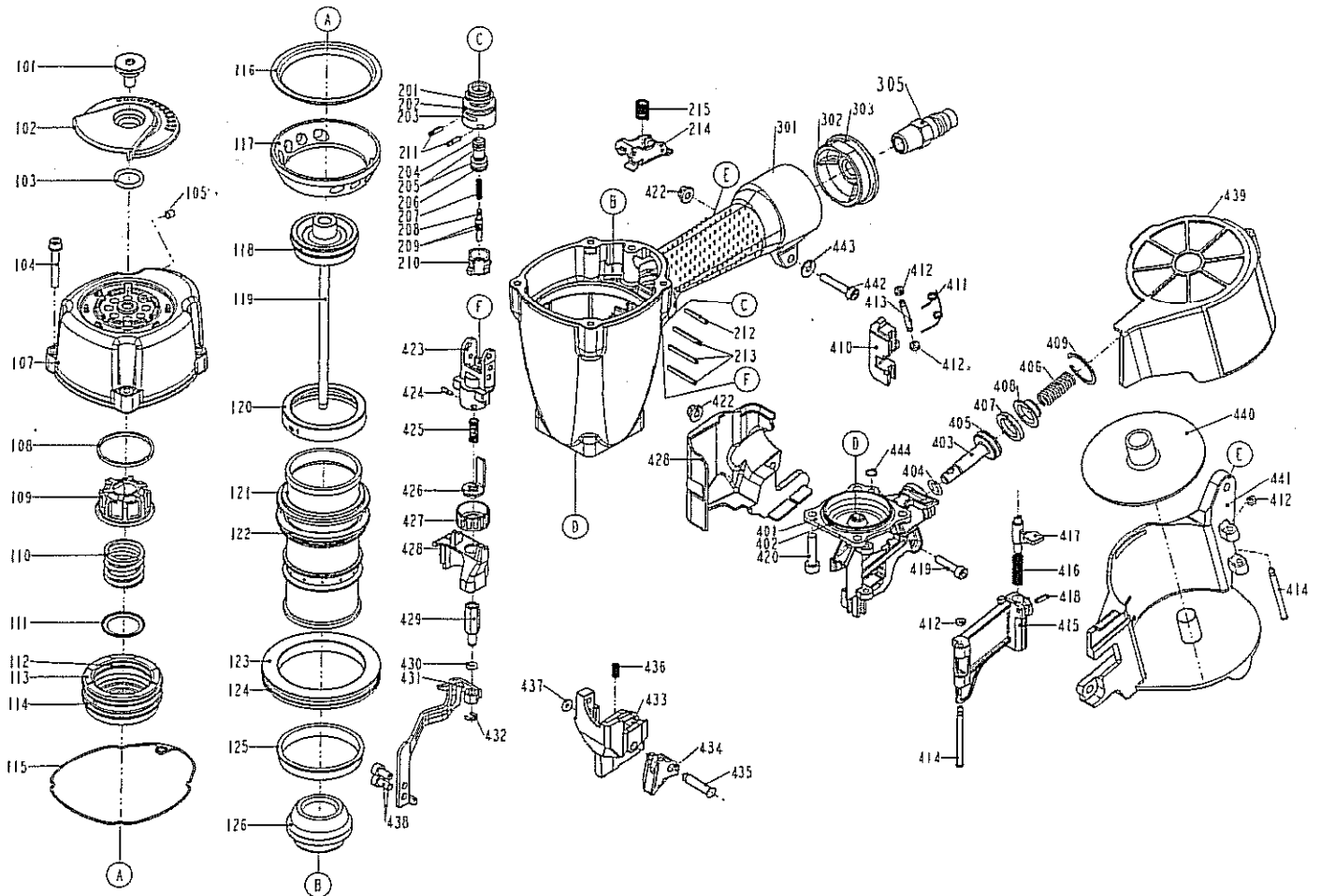


DIAGRAM OF MON/CNP33-65MC/CE



ITEM NO.	PART NO.	DESCRIPTION	ITEM NO.	PART NO.	DESCRIPTION	ITEM NO.	PART NO.	DESCRIPTION
101	1136B-0374702-1	DEFLECTOR PAD	209	2041102-01030-0	O - RING	423	11338-0764701-1	SAFETY GUIDE
102	11371-0374704-1	DEFLECTOR	210	11373-0084701-1	TRIGGER VALVE HEAD	424	2040400-04050-0	SPRING PIN
103	2041105-02010-0	O - RING	211	2040400-05060-0	SPRING PIN	425	11337-0084701-1	SAFETY SPRING
104	2040100-03220-0	BOLT W/FLAT WASHER	212	2040400-05110-0	SPRING PIN	426	11332-0794705-1	SAFETY B
105	2040104-03010-0	HEX.SOC.HD.SCREW	213	2040400-05160-0	SPRING PIN	427	11393-0761101-1	ADJUST AXIE
107	11369-0984301-1	CAP	214	11224-0461101-1	TRIGGER UNIT	428	11374-0764701-1	COVER-SAFETY
108	11381-0950001-1	WASHER SEAL	215	11376-0154701-1	SPRING	429	11393-1054701-1	ADJUST ROD
109	11370-0950001-1	SEAL	301	11230-109H802-1	GUN BODY UNIT	430	2041102-01050-0	O - RING
110	11360-1010001-1	COMPRESSION SPRING	302	11346-0081301-1	END CAP	431	11254-1054701-2	SAFETY A UNIT
111	11381-0950002-1	WASHER	303	2041109-05050-0	O - RING	432	2040302-24010-0	E - RING
112	2041108-05070-0	O - RING	305	1135V-0000005-1	AIR PLUG	433	113BL-1054701-1	PROBE
113	11368-1010001-1	HD.VALVE PISTON	401	11382-1054701-1	NOSE PIECE	434	1135D-1054701-1	GUIDE BLOCK
114	2041104-06050-0	O - RING	402	2041104-05020-0	O - RING	435	11324-1054701-2	FIXED PIN
115	1132M-1094701-1	PACKING	403	11364-0764702-1	FEED PISTON	436	11376-1310001-1	SPRING
116	1136D-0984701-1	PRESS RING	404	2041109-01050-0	O - RING	438	2040101-03040-3	HEX.SOC.HD.BOLT
117	1131E-0084701-2	CYLINDER PRESS RING	405	2041100-02040-0	O - RING	439	11355-1050001-1	MAGAZINE COVER
118	2041100-05062-0	O - RING	406	1138J-1054701-1	PUSHER SPRING	440	1132Y-1054701-1	NAIL BRACKET
119	11204-1050003-1	DRIVER UNIT	407	1134W-0810001-1	FEED BUMPER	441	11354-1054701-1	MAGAZINE CASE
120	11399-1014701-1	COLLAR	408	11366-0814701-1	FEED PISTON CAP	442	2040101-03121-0	HEX.SOC.HD.BOLT
121	11320-1050001-1	CYLINDER	409	2040300-01010-0	C - RING	443	2040202-03010-0	FLAT WASHER
122	2041109-06020-0	O - RING	410	11306-1054702-1	FEED FINGER	444	2041109-01050-0	O - RING
123	11321-0080006-1	CYLINDER SPACER	411	11307-0780001-1	FEED FINGER SPRING			
124	2041104-08010-0	O - RING	412	1135H-0790001-1	PU RETAINER			
125	11322-0764701-1	CYLINDER RING	413	11365-0664701-1	PIN FEED PISTON			
126	11327-0764702-1	BUMPER	414	11362-0814701-1	DOOR SHAFT PIN			
201	2041104-02020-0	O - RING	415	113AT-1054701-1	DOOR			
202	2041104-02030-0	O - RING	416	11311-0794701-1	LATCH SPRING			
203	11374-0084701-1	PLUNGER CAP	417	11310-0794701-1	DOOR LATCH			
204	1133S-0080001-1	VALVE PLUNGER	418	2040400-05050-0	SPRING PIN			
205	2041100-01070-0	O - RING	419	2040101-03100-0	HEX.SOC.HD.BOLT			
206	2041100-01030-0	O - RING	420	2040101-04200-2	HEX.SOC.HD.BOLT			
207	11376-0254701-1	SPRING	421	1134C-1054701-1	SAFETY COVER			
208	11375-0084701-1	PLUNGER	422	2040501-03040-0	BOLT CAP			