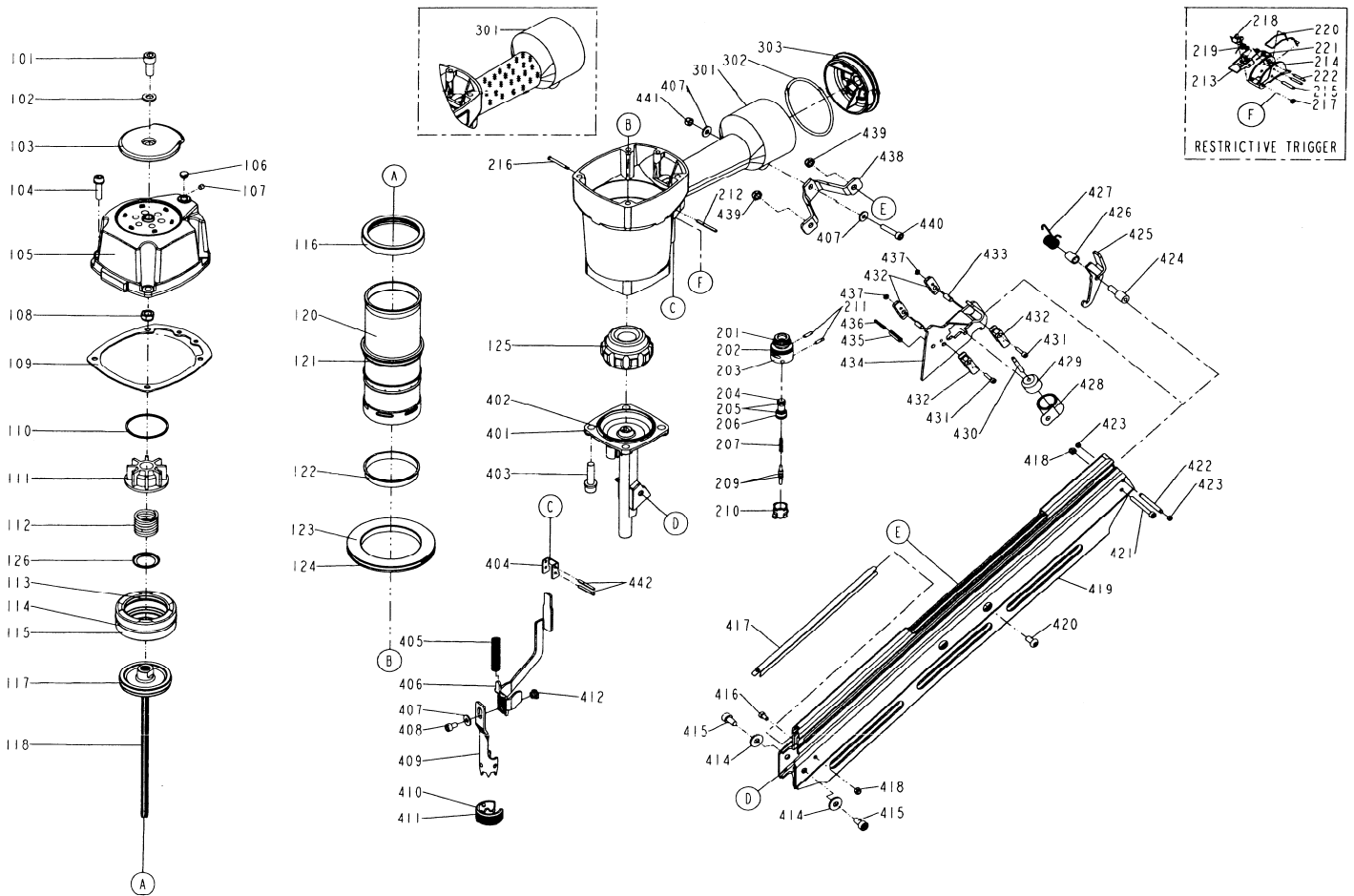


DIAGRAM OF SN34-100C



ITEM NO.	PART NO.	DESCRIPTION	ITEM NO.	PART NO.	DESCRIPTION	ITEM NO.	PART NO.	DESCRIPTION
101	2040101-05020-0	HEX.SOC.HD.BOLT	210	11373-0084701-1	TRIGGER VALVE HEAD	421	2040101-02141-0	HEX.SOC.HD.BOLT
102	2040202-06010-0	FLAT WASHER	211	2040400-05060-0	SPRING PIN	422	1132E-0374701-1	LATCH PIN
103	11371-0370001-1	DEFLECTOR	212	2040400-05160-0	SPRING PIN	423	1135H-0250001-1	SHAFT RING
104	2040100-04020-0	BOLT ASSY	213	11317-0254703-2	SECONDARY TRIGGER	424	1133V-0354702-1	MAGAZINE SPACER
105	11369-0371304-1	CAP	214	11316-0250004-3	TRIGGER	425	11343-0354701-1	LATCH
106	1135S-0350001-1	GROMMET	215	11325-0254701-2	PIN	426	11398-0350001-1	LATCH SPRING BUSHING
107	2040104-03010-0	HEX.SOC.HD.SCREW	216	11318-0464701-1	TRIGGER PIVOT PIN	427	1132F-0354701-1	LATCH SPRING
108	2040500-05010-0	LOCK NUT	217	1131D-0460001-1	URETHANE RETAINER	428	11372-0350001-1	SPRING
109	11302-0370001-2	CYLINDER CAP SEAL	218	1133L-0250002-3	STOPPER	429	11386-0370001-1	ROLLING ELEMENT
110	11380-0374701-1	GASKET	219	11315-0250002-1	SPRING	430	11385-0604701-1	ROLL PIN
111	11370-0370001-2	SEAL	220	11376-0250001-1	SPRING	431	2040101-01020-0	HEX.SOC.HD.BOLT
112	11360-0354701-3	COMPRESSION SPRING	221	11319-0250002-2	SPRING	432	1133W-0370001-3	PUSHER BEARING
113	2041108-05040-0	O - RING	222	2040401-03080-0	SPIRAL PINS	433	11329-0354701-1	PIN
114	2041108-07010-0	O - RING	301	11230-037H803-1	GUN BODY UNIT	434	11363-0644706-1	PUSHER
115	11368-0370004-1	HD.VALVE PISTON	302	2041106-07010-0	O - RING	435	2040400-08100-0	SPRING PIN
116	11399-0370004-1	COLLAR	303	11346-0371304-1	END CAP	436	2040400-05100-0	SPRING PIN
117	2041108-06030-0	O - RING	401	11382-0874701-3	NOSE PIECE	437	2040500-01010-0	LOCK NUT
118	11204-0870001-1	DRIVER UNIT	402	2041104-07010-0	O - RING	438	11323-0874702-1	POSITIONING SHEET
120	11320-0370007-1	CYLINDER	403	2040100-05010-2	BOLT ASSY	439	2040500-04010-0	LOCK NUT
121	2041101-06010-0	O - RING	405	11337-0644701-2	SAFETY SPRING	440	2040101-03161-0	HEX.SOC.HD.BOLT
122	11322-0370002-1	CYLINDER RING	407	2040202-03010-0	FLAT WASHER	441	2040500-03020-0	LOCK NUT
123	11321-0370001-2	CYLINDER SPACER	408	2040101-03030-0	HEX.SOC.HD.BOLT	442	2040400-05130-0	SPRING PIN
124	2041101-09010-0	O - RING	409	11331-0874701-1	SAFETY A			
125	11327-0370001-4	BUMPER	410	11339-0374701-1	PROTECTIVE CASING			
126	11381-0864701-1	WASHER	411	1131G-0374701-1	FIXED RING			
201	2041104-02020-0	O - RING	412	1135K-0644701-1	SCREW FIXING SEAT			
202	2041104-02030-0	O - RING	414	2040202-04010-0	FLAT WASHER			
203	11374-0084701-1	PLUNGER CAP	415	2040101-04020-0	HEX.SOC.HD.BOLT			
204	1133S-0250002-1	VALVE PLUNGER	416	2040101-02030-0	HEX.SOC.HD.BOLT			
205	2041100-01070-0	O - RING	417	11396-0644709-1	STEEL CHANNEL			
206	2041100-01030-0	O - RING	418	2040500-02010-0	LOCK NUT			
207	11376-0254701-1	SPRING	419	11389-0874701-1	MAGAZINE A			
209	2041102-01030-0	O - RING	420	2040102-04010-0	HALF ROUND HD.HEX.BOLT			