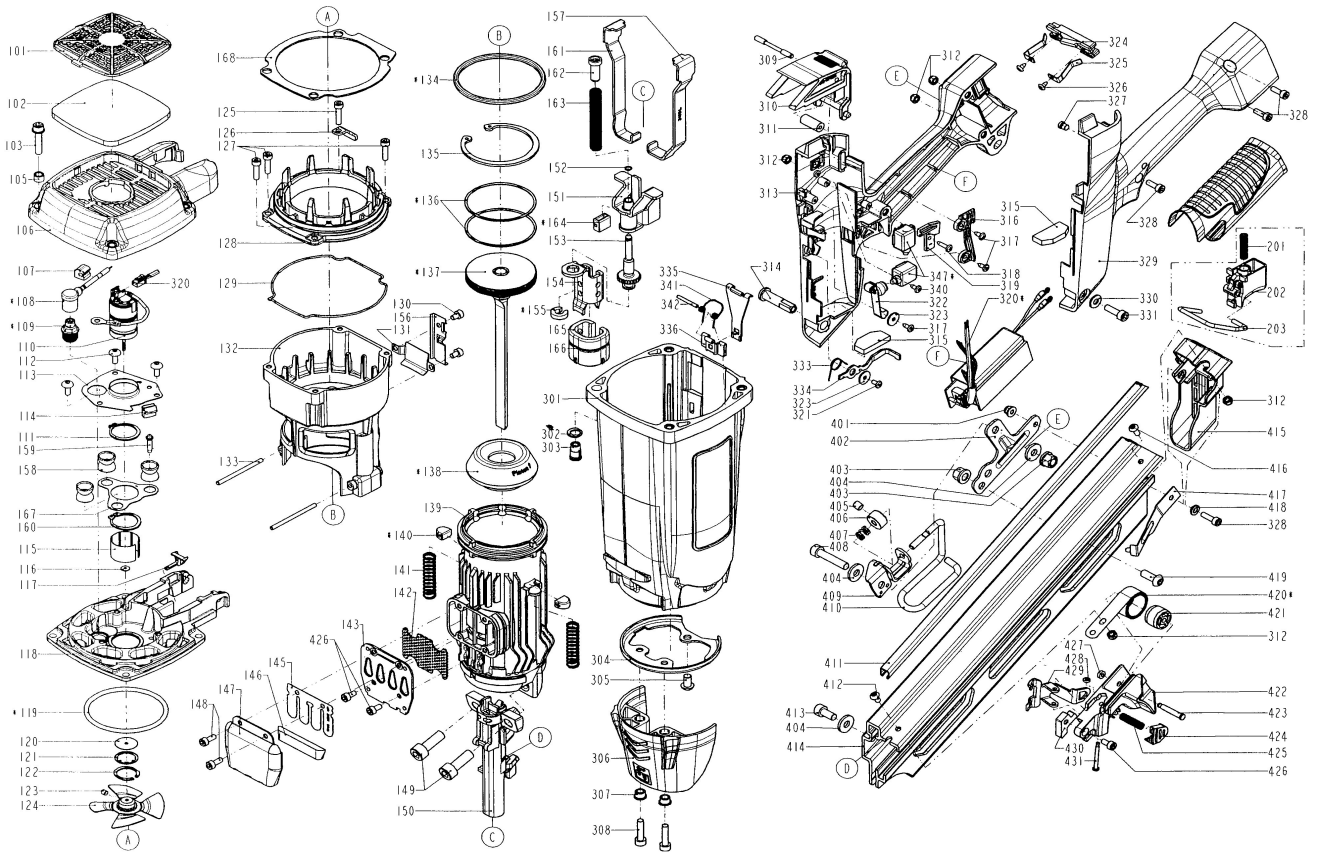


DIAGRAM OF MON/GSN34-90-1/CE



ITEM NO.	PART NO.	DESCRIPTION	ITEM NO.	PART NO.	DESCRIPTION	ITEM NO.	PART NO.	DESCRIPTION
101	11371-1154705-1	DEFLECTOR	150	11382-1154702-2	NOSE PIECE	326	2040107-01040-0	TAP BOLT
102	1121N-1150002-1	FILTER UNIT	151	11256-1154702-1	SAFETY B UNIT	327	113AP-1150001-1	LED COVER
103	2040100-03130-0	BOLT W/FLAT WASHER	152	2040309-00010-0	SELF-LOCKING EXTERNAL NUTS	328	2040101-02070-0	HEX.SOC.HD.BOLT
105	1136P-1154701-1	COLLOR	153	11249-1154701-2	ADJUST AXIE UNIT	329	1137K-1154705-2	HANDLE B
106	11369-1154702-1	CAP	154	11331-1154707-1	SAFETY A	330	2040201-03040-0	FLAT WASHER
107	1136H-1154705-1	RAFT HOOK BRACKET	155	1131C-1154703-1	RING	331	2040101-03070-2	HEX.SOC.HD.BOLT
108	11216-1150001-1	HIGH VOLTAGE CABLE SET	156	1137D-1150001-1	PUSHING	333	11315-1154701-1	SPRING A
109	1120D-1154701-1	SPARKLER	157	11330-1154704-1	SAFETY C(LEFT)	334	1137G-1154701-2	LINK ROD
110	1120N-1150003-1	MOTOR UNIT	158	1134W-1154706-1	FEED BUMPER	335	113AK-1154701-1	STOPPER
111	2040301-17010-0	S - RING	159	113CK-1150001-1	POSITIONING SHAFT	336	1134K-1154701-2	STOPPER SPRING
112	2040102-02043-5	HALF ROUND HD.HEX.BOLT	160	2040301-25010-0	S - RING	340	2040108-01030-5	SELF TAPPING BOLT
113	1131J-1154701-1	POSITIONING SHEET	161	11330-1154705-1	SAFETY C(RIGHT)	341	11315-1154701-1	SPRING
114	1136H-1154704-1	GROUND WIRE BRACKET	162	11395-1154701-1	SAFETY ROD	342	2040400-04110-0	SPRING PIN
115	11398-1150002-1	SLEEVE MOTOR	163	11337-1154702-1	SAFETY SPRING	347	1122B-1150001-1	MOTOR CABLE
116	11380-1150001-1	WASHER-MOTOR SHAFT	164	1134W-1154703-1	FEED BUMPER	401	2040501-02020-0	BOLT CAP
117	113A6-1151101-2	FUEL STEM ADAPTER	165	11339-1154702-1	PROTECTIVE CASING	402	11323-1154705-1	BRACKET UNIT
118	1139U-1150002-2	END CAP-COMBUSTION CHAMBER	166	1131G-1154702-1	FIXED RING	403	2040501-04010-0	BOLT CAP
119	2041108-06131-0	O - RING	167	1133X-1150001-1	SPACER	404	2040202-04010-0	FLAT WASHER
120	1136X-1150001-1	SEAL	168	1133X-1154702-1	SPACER	405	2040104-04010-0	HEX.SOC.HD.SCREW
121	11323-1150003-1	SEAL PLATE-MOTOR	201	11319-1154701-1	SPRING	406	1136C-1154702-1	POSITIONING AXIS
122	2040303-35010-0	IN-CONCENTRIC RING	202	11224-1154701-1	TRIGGER UNIT	407	1138J-1154701-1	SPRING RETAINER
123	2040104-02010-5	HEX.SOC.HD.SCREW	203	11335-1154702-1	SAFETY	408	2040101-04110-0	HEX.SOC.HD.BOLT
124	1120C-1150001-2	COOLING FAN ASSEMBLY	301	11384-1155801-1	GUN BODY	409	1136H-1154703-1	RAFT HOOK BRACKET
125	2040101-02090-0	HEX.SOC.HD.BOLT	302	11380-1154702-1	WASHER CAP	410	1133D-1154703-1	SPRING RETAINER
126	1135B-1150001-2	GUIDE	303	11398-1150001-1	CAP NUT	411	11396-0644707-1	STEEL CHANNEL
127	2040101-02080-4	HEX.SOC.HD.BOLT	304	11323-1154704-2	CYLINDER BRACKET	412	2040102-02010-0	HALF ROUND HD.HEX.BOLT
128	113AE-1150002-2	UPPER COMBUSTION CHAMBER	305	2040101-03040-2	HEX.SOC.HD.BOLT	413	2040101-04020-2	HEX.SOC.HD.BOLT
129	1132M-1150901-1	PACKING	306	1137A-1154702-1	SAFETY COVER	414	11389-1154702-1	MAGAZINE A
130	2040101-02020-2	HEX.SOC.HD.BOLT	307	11398-1154702-1	WASHER-NOSE COVER	415	11390-1154701-2	PROTECTING HOOD COVER
131	1139B-1150001-2	WASHER	308	2040101-03080-2	HEX.SOC.HD.BOLT	416	2040102-02040-0	HALF ROUND HD.HEX.BOLT
132	1139V-1150002-3	COMBUSTION CHAMBER	309	11325-1154702-1	PIN-FUEL ACTUATOR	417	1130S-0644703-1	STOP NAIL PLATE
133	1131K-1150001-1	PIN	310	113A7-1154701-1	FUEL ACTUATOR	418	11380-1154701-2	GASKET
134	2041104-07061-0	O-RING	311	11398-1154701-1	BUSH-FUEL ACTUATOR	419	2040102-04030-0	HALF ROUND HD.HEX.BOLT
135	2040300-14010-0	C - RING	312	2040500-02010-0	LOCK NUT	420	11372-0830001-1	SPRING
136	11350-1154701-1	PISTON RING	313	1137K-1154704-2	HANDLE A	421	11386-0370002-1	ROLLING ELEMENT
137	11204-1154701-2	DRIVER UNIT	314	11325-1154701-2	HANDLE BOLT	422	1136E-1154701-2	PROTECTING HOOD COVER
138	11327-1154701-1	BUMPER	315	1138W-1150001-1	SPACER	423	11385-0644701-1	ROLL PIN
139	11320-1150006-1	CYLINDER	316	11323-1154706-1	BRACKET UNIT	424	1138B-0644701-1	GLOVE
140	1134W-1154705-1	BUMPER-COMBUSTION CHAMBER	317	2040108-01020-5	SELF TAPPING BOLT	425	1136F-0644701-1	SPRING
141	11337-1154701-1	SAFETY SPRING	318	2040108-01040-6	SELF TAPPING BOLT	426	2040101-02030-0	HEX.SOC.HD.BOLT
142	1139W-1150001-2	EXHAUST MESH PLATE	319	11323-1154707-1	WIRE GUIDE B	427	1135H-0790001-1	PU RETAINER
143	113A0-1150001-1	EXHAUST BAFFLE	320	1120G-1150007-2	PCB ASSEMBLY	428	1131D-0460001-1	URETHANE RETAINER
145	1139X-1150001-2	REED VALVE	321	2040108-01050-5	SELF TAPPING BOLT	429	11363-0644705-2	PUSHER
146	1139L-1150001-1	CLEANER	322	120R-1150001-2	MOTOR FAN SWITCH LEVER UNIT	430	1136G-1154701-1	SQUARE UNITS
147	113A3-1150001-1	DEFLECTOR	323	2040201-01040-0	FLAT WASHER	431	11318-0084701-1	TRIGGER PIVOT PIN
148	2040101-02040-0	HEX.SOC.HD.BOLT	324	1136H-1154701-1	BATTERY NODE BRACKET			
149	2040101-05090-2	HEX.SOC.HD.BOLT	325	113A8-1150001-1	BATTERY NODE			