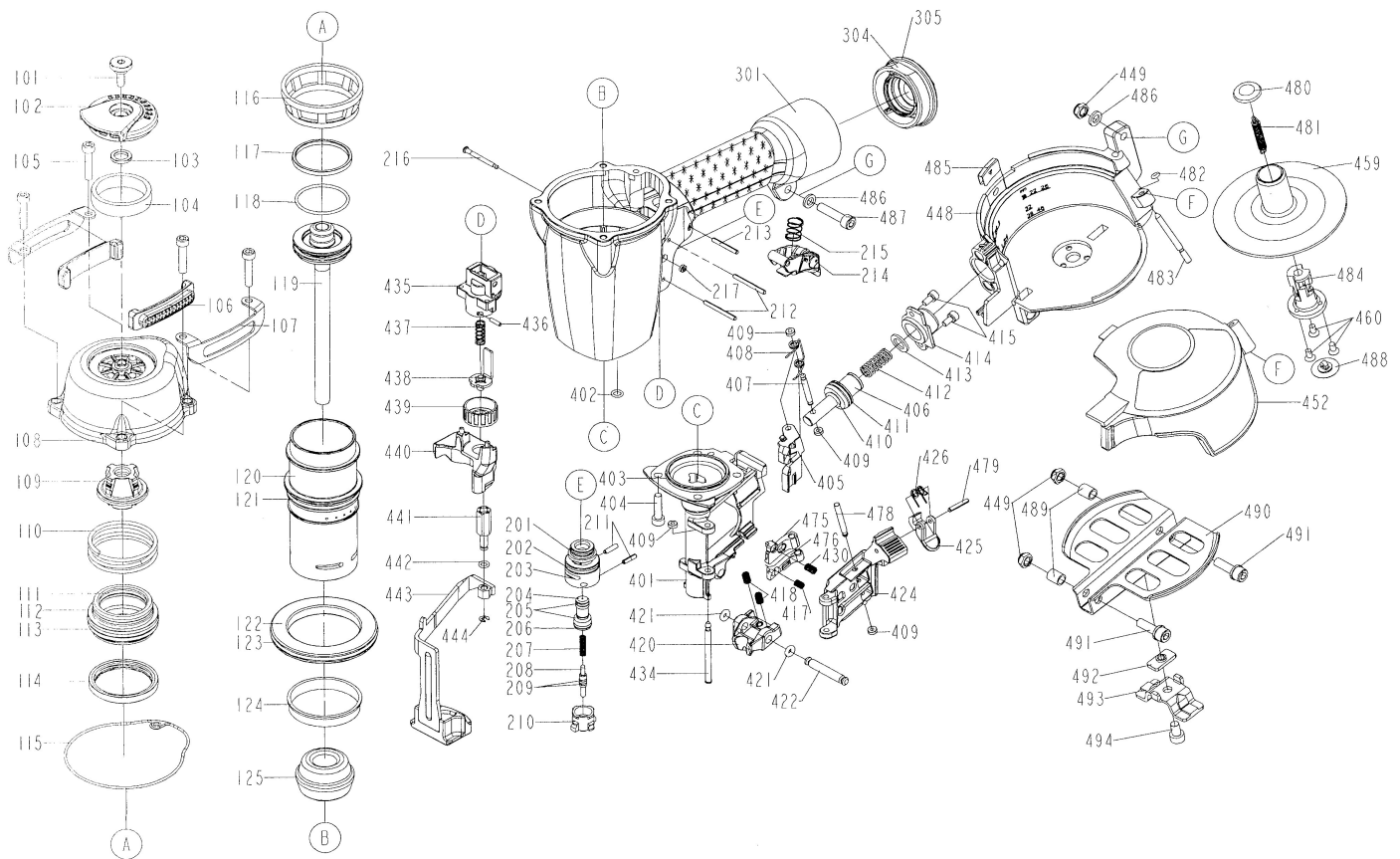


DIAGRAM OF MON/CNW31-45C/CE



ITEM NO.	PART NO.	DESCRIPTION	ITEM NO.	PART NO.	DESCRIPTION	ITEM NO.	PART NO.	DESCRIPTION
101	1137V-0464701-1	DEFLECTOR BOLT(3M2353)	211	2040400-05060-0	SPRING PIN	435	11338-0254706-1	SAFETY GUIDE
102	11371-0254702-1	DEFLECTOR	212	2040400-05160-0	SPRING PIN	436	2040400-04050-0	SPRING PIN
103	1135G-0464701-1	RUBBER PAD	213	2040400-05120-0	SPRING PIN	437	11337-0084701-1	SAFETY SPRING
104	1132T-0460001-1	MUFFLER	214	11224-0764701-1	TRIGGER UNIT	438	11256-0764702-2	SAFETY B UNIT
105	2040101-03110-0	HEX.SOC.HD.BOLT	215	11376-0370001-1	SPRING	439	11393-0767802-1	ADJUST AXIE
106	1135R-0254706-1	PROTECTIVE CUSHION	216	11318-0374701-1	TRIGGER PIVOT PIN	440	1137A-0254702-1	SAFETY COVER
107	11397-0254712-2	GUIDE COVER	217	1131D-0460001-1	URETHANE RETAINER	441	11393-0254705-1	ADJUST ROD
108	11369-0251302-1	CAP	301	11230-025H801-1	GUN BODY UNIT	442	2041102-01050-0	O - RING
109	11370-0250005-1	SEAL	304	11346-0081301-1	END CAP	443	11257-0254701-1	SAFETY UNIT
110	11360-0460001-3	COMPRESSION SPRING	305	2041109-05050-0	O - RING	444	2040302-23010-0	E - RING
111	2041104-04070-0	O - RING	401	11382-0254704-2	NOSE PIECE	448	11354-0254701-1	MAGAZINE CASE
112	11368-0460006-1	HD.VALVE PISTON	402	2041102-01040-0	O - RING	449	2040500-04010-0	LOCK NUT
113	2041109-05030-0	O - RING	403	2041109-04010-0	O - RING	452	11355-0254701-2	MAGAZINE COVER
114	11399-0460002-1	COLLAR	404	2040101-03090-2	HEX.SOC.HD.BOLT	459	11356-0250001-2	SPACER
115	1132M-0254705-1	PACKING	405	11306-0254704-1	FEED FINGER	460	2040107-02050-0	TAP BOLT
116	1131E-0080001-2	CYLINDER PRESS RING	406	11364-0254704-1	FEED PISTON	475	1130G-0254702-1	FIRST STOPPER FINGER
117	11350-0460601-1	PISTON RING	407	11365-0664701-1	PIN FEED PISTON	476	1130C-0254701-1	SECOND STOPPER FINGE
118	2041102-04040-0	O - RING	408	11307-0250001-1	FEED FINGER SPRING	478	11359-0784702-1	PIN-NAIL STOP
119	11204-0250021-2	DRIVER UNIT	409	1135H-0790001-1	PU RETAINER	479	2040400-05090-0	SPRING PIN
120	11320-0252401-1	CYLINDER	410	2041109-01050-0	O - RING	480	1134N-0254701-1	SPRING BASE A
121	2041100-05050-0	O - RING	411	2041105-02060-0	O - RING	481	11328-0254701-1	PULL SPRING
122	11321-0460001-1	CYLINDER SPACER	412	1133F-0250002-1	FEED PISTON SPRING	482	2041100-01040-0	O - RING
123	2041104-07030-0	O - RING	413	1134W-0250003-1	FEED-BUMPER	483	1132V-0254702-1	PIN
124	11322-0250001-1	CYLINDER RING	414	11366-0254705-1	FEED PISTON CAP	484	11357-0250001-1	ADJUST POST
125	11327-0084702-1	BUMPER	415	2040100-02040-2	BOLT ASSY	485	1135P-0254702-1	PROTECTION UNIT
201	2041104-02020-0	O - RING	417	1130D-0250001-1	SPRING	486	2040201-04020-0	FLAT WASHER
202	2041104-02030-0	O - RING	418	1138J-0250001-1	GUIDE BLOCK SPRING	487	2040101-04090-0	HEX.SOC.HD.BOLT
203	11374-0084701-1	PLUNGER CAP	420	1135D-0254702-1	GUIDE BLOCK	488	1134M-0250002-1	SPRING BASE
204	1133S-0250001-1	VALVE PLUNGER	421	2041104-01040-0	O - RING	489	11398-0254702-1	LATCH SPRING BUSHING
205	2041100-01070-0	O - RING	422	11324-0254702-1	FIXED PIN	490	1132U-0254703-1	MAGAZING GUARD
206	2041100-01030-0	O - RING	424	11361-0254704-1	DOOR	491	2040100-04010-0	BOLT ASSY
207	11376-0254701-1	SPRING	425	11310-0254702-2	DOOR LATCH	492	1130X-0254702-1	ADJUSTING UNT
208	11375-0084701-1	PLUNGER	426	11311-0254703-1	LATCH SPRING	493	11312-0254704-1	ADJUSTING PLATE
209	2041102-01030-0	O - RING	430	1133C-0784701-1	STOPPER FINGER SPRING	494	2040101-04010-0	HEX.SOC.HD.BOLT
210	11373-0084701-1	TRIGGER VALVE HEAD	434	11362-0814701-1	DOOR SHAFT PIN			