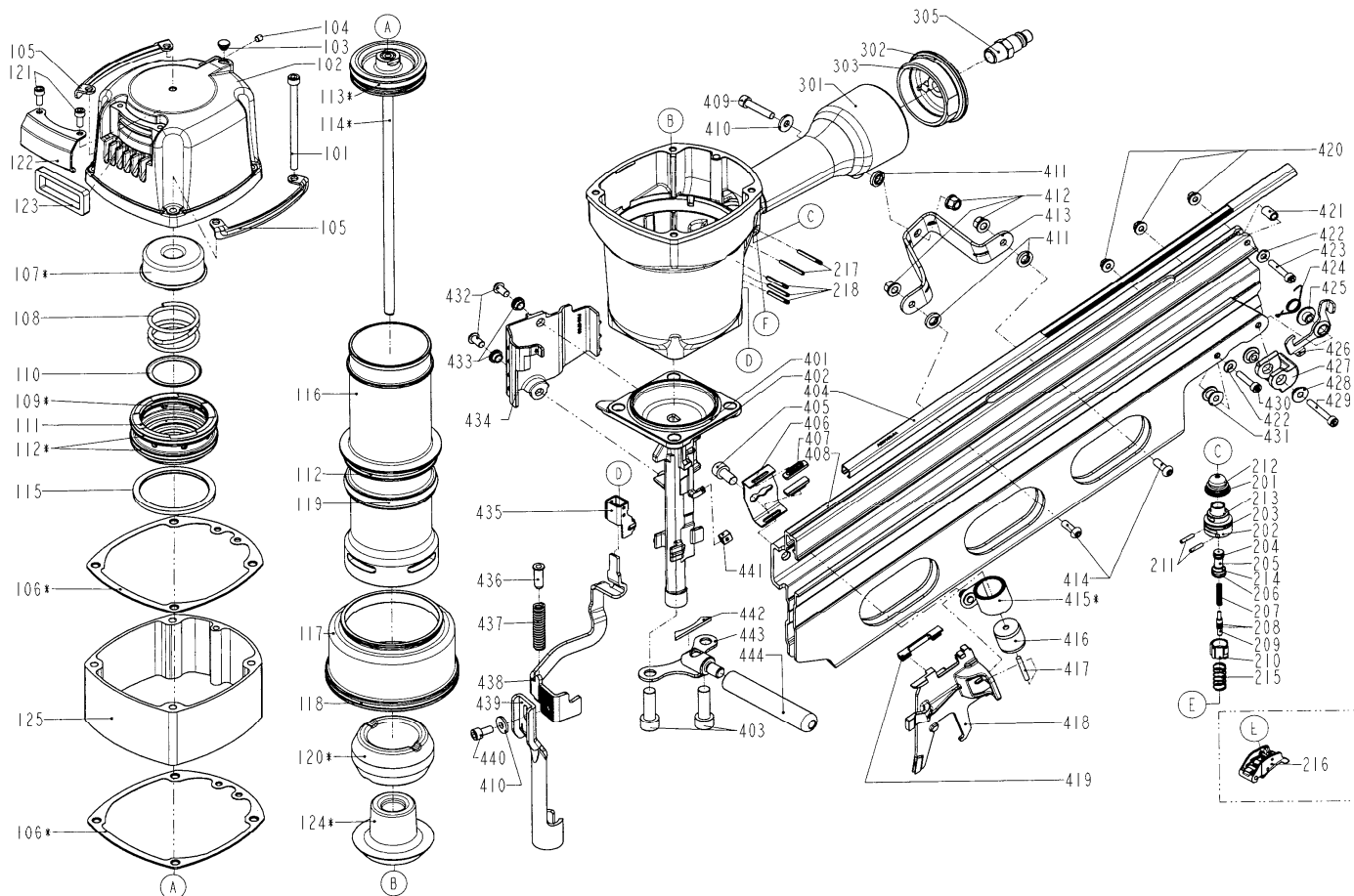


DIAGRAM OF MON/SN22-160C/CE



To exchange the two gaskets #106 when repair the cap.

ITEM NO.	PART NO.	DESCRIPTION	ITEM NO.	PART NO.	DESCRIPTION	ITEM NO.	PART NO.	DESCRIPTION
101	2040101-04241-0	HEX.SOC.HD.BOLT	209	11375-0860002-1	PLUNGER	420	2040501-03040-0	BOLT CAP
102	11369-1031301-1	CAP	210	11373-0860001-1	TRIGGER VALVE HEAD	421	11398-1454701-1	LATCH SPRING BUSHING
103	1135S-0350001-1	GROMMET	211	11329-0860001-1	PIN	422	2040201-03040-0	FLAT WASHER
104	2040104-03010-0	HEX.SOC.HD.SCREW	212	1137A-0860001-1	COVER-PLUNGER	423	2040101-03210-0	HEX.SOC.HD.BOLT
105	11397-1034701-1	GUIDE COVER	213	2041104-02070-0	O - RING	424	1132F-0374701-1	LATCH SPRING
106	11302-1034701-1	CYLINDER CAP SEAL	214	2041100-01050-0	O - RING	425	11381-0374701-1	WASHER
107	11370-1030001-1	SEAL	215	11376-0370001-1	SPRING	426	11343-1454701-1	LATCH
108	11360-1030001-2	COMPRESSION SPRING	216	11224-1111101-1	TRIGGER UNIT	427	1134W-1374701-1	FEED BUMPER
109	2041108-06050-0	O - RING	217	2040401-05150-0	SPIRAL PINS	428	113BF-1374701-1	FEED BUMPER SPACER RING
110	11381-1030001-1	WASHER	218	2040401-05120-0	SPIRAL PINS	429	2040101-03200-0	HEX.SOC.HD.BOLT
111	11368-1030001-1	HD.VALVE PISTON	301	11230-145H801-1	GUN BODY UNIT	430	2040101-03110-0	HEX.SOC.HD.BOLT
112	2041108-07050-0	O - RING	302	2041101-05020-0	O - RING	431	1133V-1374701-1	MAGAZINE SPACER
113	2041100-06011-0	O - RING	303	11346-0861302-1	END CAP	432	2040102-04010-2	HALF ROUND HD.HEX.BOLT
114	11204-1450001-1	DRIVER UNIT	305	1135V-0000019-1	AIR PLUG	433	1136L-1374701-1	PROTECTIVE INSERT
115	11399-1030001-1	COLLAR	401	2041104-08020-0	O - RING	434	1134R-1374701-1	SPRING GUIDE
116	11320-1450001-1	CYLINDER	402	11382-1454701-2	NOSE PIECE	435	11338-0864701-2	SAFETY GUIDE
117	11321-1450001-1	CYLINDER SPACER	403	2040101-06010-2	HEX.SOC.HD.BOLT	436	11395-1374701-1	SAFETY ROD
118	2041104-11010-0	O - RING	404	11396-1454701-1	STEEL CHANNEL	437	11337-1374701-1	SAFETY SPRING
119	2041108-07060-0	O - RING	405	2040101-05010-2	HEX.SOC.HD.BOLT	438	11332-1374701-1	SAFETY B
120	11327-1034702-1	BUMPER-A	406	1135B-1454701-1	GUIDE	439	11331-1454701-1	SAFETY A
121	2040101-03050-9	HEX.SOC.HD.BOLT	407	1135G-1454701-1	RUBBER PAD	440	2040101-04020-0	HEX.SOC.HD.BOLT
122	11371-1034701-1	DEFLECTOR	408	11389-1454701-1	MAGAZINE A	441	1134W-0374701-1	FEED BUMPER
123	1132T-1110001-1	MUFFLER	409	2040101-04111-0	HEX.SOC.HD.BOLT	442	1135G-1114701-1	RUBBER PAD
124	11327-1034703-1	BUMPER-B	410	2040202-04010-0	FLAT WASHER	443	1120K-1114701-3	SECOND HANDLE BASE UNIT
125	1130E-1451301-1	CAP	411	12319-0070001-3	SEAL	444	11215-1374701-2	HANDLE
201	2041104-02060-0	O - RING	412	2040501-04010-0	BOLT CAP			
202	11374-0860001-1	PLUNGER CAP	413	11323-1454701-1	POSITIONING SHEET			
203	2041100-02050-0	O - RING	414	2040102-04060-0	HALF ROUND HD.HEX.BOLT			
204	2041100-01070-0	O - RING	415	11278-1450001-1	SPRING UNIT			
205	1133S-0860001-1	VALVE PLUNGER	416	11386-1450001-1	ROLLING ELEMENT			
206	2041100-01030-0	O - RING	417	2040403-07150-0	PIN			
207	11376-0860001-1	SPRING	418	11363-1454701-1	PUSHER			
208	2041108-01020-0	O - RING	419	1133W-1454701-1	PUSHER BEARING			